

**ORTHOPEDIC
SOFT GOODS
PRODUCT
DIRECTORY**

allardusa.com



The background of the entire page features a wireframe human figure in a blue, geometric style, standing and facing forward. In the lower-left foreground, a human hand is visible, reaching out towards the center. The background is a soft-focus blue with white bokeh light spots and faint, glowing lines that suggest a digital or medical theme.

ALLARD USA IS PROUD TO OFFER

an orthopedic soft good line that was developed to help you grow your business by addressing the needs of your patients and referral sources. Over the past decade we have achieved national recognition as a supplier you can trust. We are known for our superb customer service, quality education, and innovative products.

Allard USA strives to be the foundation for development of truly innovative products that provide individuals with physical challenges the opportunity to function better and improve quality of life!

Support for Better Life!

allard | **USA**

TABLE OF CONTENTS

Hand & Wrist	5
Thumb	6-7
Wrist	8-9
Ulnar Deviation	9
Resting Hand	10-11
Arm & Shoulder	13
Elbow	14
Clavicle	15
Arm Sling	15-16
Shoulder	16
Spinal	17
LSO Short	18
Hyperextension	18
Back Support	19
Knee	21
Patella	22
Knee Support	22
Post-Op & ACL	23
Foot & Ankle	25
Stabilizers	26
Mild Foot Drop	27
Planter Fascia	28
Walkers	29-30
Warranty & Terms	31



HAND & WRIST ORTHOSES

www.allardusa.com



VISSION™ UNIVERSAL THUMB SPLINT

Our Vission™ Universal Thumb Splint is patterned to fit the anatomy of either the right or left hand comfortably. The brace stabilizes the CMC and MP joints of the thumb to promote healing.

Proprietary memory foam laminate. Fabric integrated D-rings eliminate twisting. Easily shaped 1st MCP stay achieves desired positioning. Anatomically contoured fit for stabilization. Easy to locate contrasting color D-rings.

Intended use:

Post-thumb fracture; Thumb intrinsic muscle injuries; Collateral ligament thumb injuries.

Item No.	Size	Measure
300990	Universal	One Size



SOT THUMB ORTHOSIS

Soft yet compressing textile cover with no hard seams or edging. Molded and shaped palmar section with aluminum reinforcement to support the thumb in an optimal resting position. S.O.T Thumb Orthosis is a completely new anatomically shaped orthosis for thumb and palm.

The SOT Thumb Orthosis is designed to restrict movement in the CMC and MCP joints and to support the hand's arch. This is done by positioning the thumb's joints and muscles in a comfortable resting position. The SOT Thumb will help to avoid overstretched ligaments that can lead to joint subluxation.

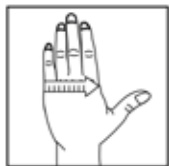
The SOT Thumb orthosis has an adjustable aluminum core that can be easily formed to fit individual anatomy and can be adjusted as the contracture changes. To launder, simply place orthosis in a laundry bag, with cover attached, and machine wash at 104° F. This unique S.O.T Thumb Orthosis makes an excellent alternative to a custom-made thumb orthosis.

Intended use:

Osteoarthritis, rheumatoid arthritis, adduction contracture of the thumb, overload injury of the CMC joint.

Measurement:

MCP width / Length from wrist to end of finger.



Item No.	Product description	Side	Size	Width	Length
287201011	S.O.T Thumb Orthosis	Left	Small	≤ 3"	≤ 7.25"
287201012	S.O.T Thumb Orthosis	Left	Medium	≤ 3.25"	≤ 7.75"
287201013	S.O.T Thumb Orthosis	Left	Large	≤ 3.5"	≤ 8.25"
287202011	S.O.T Thumb Orthosis	Right	Small	≤ 3"	≤ 7.25"
287202012	S.O.T Thumb Orthosis	Right	Medium	≤ 3.25"	≤ 7.75"
287202013	S.O.T Thumb Orthosis	Right	Large	≤ 3.5"	≤ 8.25"

SELECTION® THUMB ORTHOSIS RIGID

Soft and elastic thumb orthosis with extra stability around the thumb structures. The design supports the muscles, keeping the thumb in neutral position and unloads CMC and MCP, but allows an active "pinch" grip. At rest the thumb is kept in neutral position without straining the muscles and tendons. Can be trimmed to the desired shape.

Intended use:

Mild arthritis in the first CMC-joint. Protects the CMC-joint and the first MCP-joint. After trauma, in case of hyper mobile thumb and wrist, after arthroplasty surgery.

Item No. Left	Item No. Right	Colour	Size	Circumference Wrist
35202 1010	35202 2010	Black	X-Small	< 5"
35202 1011	35202 2011	Black	Small	5" -6"
35202 1012	35202 2012	Black	Medium	6"-6.75"
35202 1013	35202 2013	Black	Large	6.75"-8"
35202 1014	35202 2014	Black	X-Large	>8"



VISSION™ THUMB SPICA LACED

Our Vission™ Thumb Spica Laced provides a firm and comfortable support that is anatomically contoured to hold the wrist and thumb in a functional position to promote healing. Memory foam laminate for ultimate patient comfort. Anatomically contoured for superior fit. Malleable aluminum stays for customized fit. Quick lace system. Contoured, adjustable thumb-web strap. Integrated cotton knit panel for ease of application.

Intended use:

Sprains and strains; Scaphoid injuries; Carpal Tunnel Syndrome; Gamekeeper's Thumb; DeQuervain's Syndrome.

Measurement:

Wrist circumference.



Item No.	Product Description	Side	Size	Measure
300520L	Vission™ Thumb Spica Laced	Left	X-Small	5" - 5.75"
300530L	Vission™ Thumb Spica Laced	Left	Small	5.75" - 6.25"
300540L	Vission™ Thumb Spica Laced	Left	Medium	6.25" - 6.75"
300550L	Vission™ Thumb Spica Laced	Left	Large	6.75" - 7.75"
300560L	Vission™ Thumb Spica Laced	Left	X-Large	over 7.75"
300520R	Vission™ Thumb Spica Laced	Right	X-Small	5" - 5.75"
300530R	Vission™ Thumb Spica Laced	Right	Small	5.75" - 6.25"
300540R	Vission™ Thumb Spica Laced	Right	Medium	6.25" - 6.75"
300550R	Vission™ Thumb Spica Laced	Right	Large	6.75" - 7.75"
300560R	Vission™ Thumb Spica Laced	Right	X-Large	over 7.75"



VISSION™ WRIST STRAPPED 6''

Our Vission™ Wrist Strapped 6'' provides firm and comfortable support. It is anatomically contoured to hold the wrist in a functional position to promote healing. Memory foam laminate for ultimate patient comfort. Anatomically contoured for superior fit. Malleable aluminum stays for customized fit. Easy to locate contrasting color D-rings. Contoured, adjustable thumb web strap. Integrated cotton knit panel for ease of application.

Intended use:

Mild wrist sprains and strains; Tendonitis; Carpal Tunnel Syndrome; Overuse injuries; Tenosynovitis.

Measurement:

Wrist circumference.

Item No.	Product Description	Side	Size	Measure
300120R	Vission™ Wrist Strapped 6''	Right	X-Small	5" - 5.75"
300130R	Vission™ Wrist Strapped 6''	Right	Small	5.75" - 6.25"
300140R	Vission™ Wrist Strapped 6''	Right	Medium	6.25" - 6.75"
300150R	Vission™ Wrist Strapped 6''	Right	Large	6.75" - 7.75"
300160R	Vission™ Wrist Strapped 6''	Right	X-Large	Over 7.75"
300120L	Vission™ Wrist Strapped 6''	Left	X-Small	5" - 5.75"
300130L	Vission™ Wrist Strapped 6''	Left	Small	5.75" - 6.25"
300140L	Vission™ Wrist Strapped 6''	Left	Medium	6.25" - 6.75"
300150L	Vission™ Wrist Strapped 6''	Left	Large	6.75" - 7.75"
300160L	Vission™ Wrist Strapped 6''	Left	X-Large	Over 7.75"



VISSION™ WRIST STRAPPED 8''

Our Vission™ Wrist Strapped 8'' provides firm and comfortable support. It is anatomically contoured to hold the wrist in a functional position to promote healing. Memory foam laminate for ultimate patient comfort. Anatomically contoured for superior fit. Malleable aluminum stays for customized fit. Easy to locate contrasting color D-rings. Contoured, adjustable thumb web strap. Integrated cotton knit panel for ease of application.

Intended use:

Mild wrist sprains and strains; Tendonitis; Carpal Tunnel Syndrome; Overuse injuries; Tenosynovitis.

Measurement:

Wrist circumference.

Item No.	Product Description	Side	Size	Measure
300020R	Vission™ Wrist Strapped 8''	Right	X-Small	5" - 5.75"
300030R	Vission™ Wrist Strapped 8''	Right	Small	5.75" - 6.25"
300040R	Vission™ Wrist Strapped 8''	Right	Medium	6.25" - 6.75"
300050R	Vission™ Wrist Strapped 8''	Right	Large	6.75" - 7.75"
300060R	Vission™ Wrist Strapped 8''	Right	X-Large	Over 7.75"
300020L	Vission™ Wrist Strapped 8''	Left	X-Small	5" - 5.75"
300030L	Vission™ Wrist Strapped 8''	Left	Small	5.75" - 6.25"
300040L	Vission™ Wrist Strapped 8''	Left	Medium	6.25" - 6.75"
300050L	Vission™ Wrist Strapped 8''	Left	Large	6.75" - 7.75"
300060L	Vission™ Wrist Strapped 8''	Left	X-Large	Over 7.75"

VISSION™ WRIST LACED 6"

Our Vission™ Wrist Laced 6" provides firm comfortable support. It is anatomically contoured to hold the wrist in a functional position to promote healing. Memory foam laminate for ultimate patient comfort. Anatomically contoured for superior fit. Malleable aluminum stays for customized fit. Quick lace system. Contoured, adjustable thumb-web strap. Integrated cotton knit panel for ease of application.

Intended use:

Mild wrist sprains and strains; Tendonitis; Carpal Tunnel Syndrome; Overuse injuries; Tenosynovitis.

Measurement:

Wrist circumference.

Item No.	Product Description	Side	Size	Measure
300220R	Vission™ Wrist Laced 6"	Right	X-Small	5" - 5.75"
300230R	Vission™ Wrist Laced 6"	Right	Small	5.75" - 6.25"
300240R	Vission™ Wrist Laced 6"	Right	Medium	6.25" - 6.75"
300250R	Vission™ Wrist Laced 6"	Right	Large	6.75" - 7.75"
300260R	Vission™ Wrist Laced 6"	Right	X-Large	Over 7.75"
300220L	Vission™ Wrist Laced 6"	Left	X-Small	5" - 5.75"
300230L	Vission™ Wrist Laced 6"	Left	Small	5.75" - 6.25"
300240L	Vission™ Wrist Laced 6"	Left	Medium	6.25" - 6.75"
300250L	Vission™ Wrist Laced 6"	Left	Large	6.75" - 7.75"
300260L	Vission™ Wrist Laced 6"	Left	X-Large	Over 7.75"



SELECTION® ULNAR DEVIATION

Selection® Ulnar Deviation is intended for the management of Ulnar Deviation. Corrects alignment of joints of the fingers to improve extension, strength and function of the hand. Reduces pain and joint stiffness. Ulnar deviation is likely to be a characteristic for those with various forms of inflammatory disease, such as Rheumatoid Arthritis.

This may also be used for realignment and stabilization in patients with joint laxity and muscle weakness.

Intended use:

For patients with inflammatory and degenerative diseases, such as rheumatoid arthritis, that has resulted in ulnar deviation. Selection Ulnar Deviation can also be used for hyper-mobile joints and weak muscles to provide stability. Not intended for use with fixed contractures of the hand.



Item No. Left	Item No. Right	Colour	Size	Circumference MCP 2-5
35218 1010	35218 2010	Black	X-Small	5"-6 1/4"
35218 1011	35218 2011	Black	Small	6 1/4"-7 1/2"
35218 1012	35218 2012	Black	Medium	7 1/2"-8 3/4"
35218 1013	35218 2013	Black	Large	8 3/4"-9 3/4"



S.O.T RESTING HAND ORTHOSIS

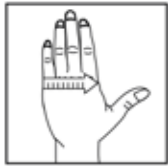
S.O.T (Smart Orthotic Treatment) is a resting orthosis for the spastic and paretic hand, when the goal is to maintain or increase the mobility of the hand. Now available in pediatric to adult sizes! The orthosis is smooth and lightweight. The S.O.T has an aluminum core which allows adjustment to the desired position. The aluminum core is embedded into polyethylene foam, which is covered with fabric. The brace is delivered in a resting position. A resting position can offer pain relief, relaxation to the hand and it also provides a good biomechanical position that may reduce the risk of flexor shortening of the wrist and fingers. The orthosis anatomic configuration supports the important thenar muscle, the CMC and MCP joint, which is particularly important for the intended patient groups, as the thumb tends to adduct at the CMC joint and hyperextend in the MCP joint. S.O.T Resting orthosis increases the conditions for an effective grip. Besides the extra wrist band, there are two other accessories: a finger divider and wedges in three different sizes.

Intended use:

Stroke, Cerebral Palsy, Rheumatoid Arthritis, Radialis Paresis, Mucular Dystrophy, Edema, or Plexus Injury

Measurement:

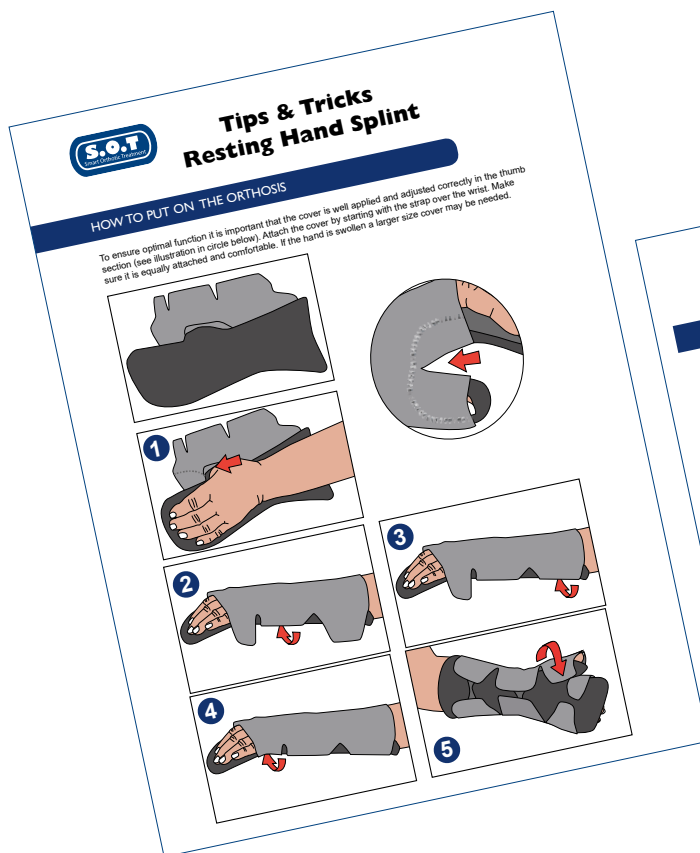
MCP width / Length from wrist to end of finger



Item No. Left	Item No. Right	Product description	Size	Width	Height
28710 1008	28710 2008	S.O.T Resting Orthosis	XXX-Small	2"	≤4.75"
28710 1009	28710 2009	S.O.T Resting Orthosis	XX-Small	≤2.5"	≤5.5"
28710 1010	28710 2010	S.O.T Resting Orthosis	X-Small	≤3"	≤6.25"
28710 1011	28710 2011	S.O.T Resting Orthosis	Small	≤3"	≤7.25"
28710 1012	28710 2012	S.O.T Resting Orthosis	Medium	≤3.5"	≤7.75"
28710 1013	28710 2013	S.O.T Resting Orthosis	Large	≤3.5"	≤8.25"
28711 0009		MCPWedge	XX-Small	2.5"	0.4"
28711 0011		MCPWedge	Small	3"	0.6"
28711 0013		MCPWedge	Large	3.5"	0.75"
28712 0003		Finger Divider	Pediatric		
28712 0005		Finger Divider	Medium		
28712 0007		Finger Divider	Large		
28713 0009		Extra Strap	XXXS - XS		
28713 0012		Extra Strap	Small - Large		
28714 1008	28714 2008	Additional Cover	XXX-Small		
28714 1009	28714 2009	Additional Cover	XX-Small		
28714 1010	28714 2010	Additional Cover	X-Small		
28714 1011	28714 2011	Additional Cover	Small		
28714 1012	28714 2012	Additional Cover	Medium		
28714 1013	28714 2013	Additional Cover	Large		

S.O.T RESTING HAND ORTHOSIS and THUMB ORTHOSIS

To ensure proper fitting and use of accessories we have a guide that can be downloaded from the web site about Tips & Tricks for SOT Resting Hand Splint and also for the SOT Thumb Orthosis.



For both the Resting Hand Splint and the Thumb Orthosis fitting and adaptation videos can be found on the web site (under each of the products) and also on YouTube.

For SOT Resting Hand Splint there are a variety of videos demonstrating the use of the Wedges, Finger Divider, Extra Wrist Strap and the best way to don and doff the product.

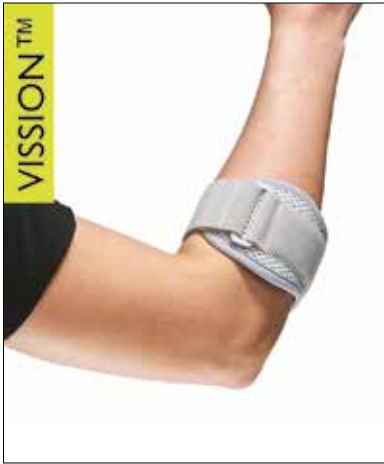
Notes

[illegible]



ARM & SHOULDER ORTHOSES

www.allardusa.com



VISSION EPI

The Vission EPI offers adjustable pressure over the flexor and extensor muscles to help relieve pain/discomfort associated with Epicondylitis. Includes two repositionable foam pads.

Intended use:

Mild and temporary medial and lateral epicondylitis (tennis / golf elbow).

Measurement:

Circumference at 2" below elbow.

Item No.	Size	Arm circumference
315130	S/M	8"-11"
315140	L/XL	12+"

VISSION™ CLAVICLE SPLINT

Our Vission™ Clavicle Splint offers comfortable support to the injured or post-operative clavicle. The splint can also be used to improve posture. Extra padding where straps join at center back. Fabric integrated D-rings eliminate strap twisting. Figure 8 design. Step down a size to limit patient adjustment. Soft foam laminated material.

Intended use:

Clavicle fractures, grade II & III acromioclavicular separations, osteolysis of the clavicle, AC degenerative joint pain, mechanical cervical disease, postural dysfunction, sternoclavicular dislocations.

Item No.	Product Description	Size	Size
202130	Vission™ Clavicle Splint	Children	Small
202140	Vission™ Clavicle Splint	Youth/Small Adults	Medium
202150	Vission™ Clavicle Splint	Adults	Large
202160	Vission™ Clavicle Splint	Large Adults	X-Large



VISSION™ MESH CONTOURED SLING

Our Vission™ Mesh Contoured Sling provides comfortable support to the affected arm/shoulder to promote healing. The contoured seams of the open mesh provide superior anatomical fit. Optimum breathability. Unique anatomical contour prevents the arm from sliding in the sling. Soft plush thumb loop. Mesh fabric adds a flair of fashion.

Intended use:

Cast support; Injuries to the arm, wrist or hand; Acromioclavicular sprains; Anterior glenohumeral dislocations.

Measurement:

Length from elbow to wrist.

Item No.	Product Description	Side	Measure
310130	Vission™ Mesh Contoured Arm Sling	Small	7" - 9"
310140	Vission™ Mesh Contoured Arm Sling	Medium	9" - 11"
310150	Vission™ Mesh Contoured Arm Sling	Large	11" - 13"
310160	Vission™ Mesh Contoured Arm Sling	X-Large	13" - 15"





SLING WITH ABDUCTION PILLOW

Our Sling with Abduction Pillow transfers the weight of the forearm to the patient's back and to the unaffected shoulder while abducting the arm away from the body at about 10-15 degrees for shoulder rehabilitation. Cradles the arm in desired position. Contoured abduction pillow. Exercise ball stimulates circulation. Adjustable shoulder strap pad. Fits left or right arm.

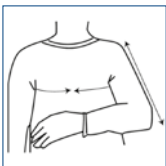
Intended use:

Rotator cuff repairs; Anterior repairs; Posterior dislocations; Capsular shifts; Global shoulder instability.

Measurement:

Length from elbow to wrist.

Item No.	Product Description	Size	Measure
310230	Vission™ Sling with Abduction Pillow	Small	9" - 10"
310240	Vission™ Sling with Abduction Pillow	Medium	10" - 11"
310250	Vission™ Sling with Abduction Pillow	Large	11" - 12"
310260	Vission™ Sling with Abduction Pillow	X-Large	12" - 13"



VISSION SHOULDER IMMOBILIZER

Vission shoulder immobilizer is intended to immobilize and contain the upper limb, elbow, forearm flexed at 90° or 130° as required.

Especially suited for shoulder and pectoral girdle lesions. The product is reversible and can be used either on the left or on the right shoulder as required.

Intended use:

Shoulder, arm, elbow and pectoral girdle trauma (fractures, dislocations and sprains). Shoulder and pectoral girdle surgery. Paralysis of brachial-plexus.

Item no.	Colour	Size	Chest circumf.	Length upper arm
46022 0010	Navy blue	X-Small	26.75"-30.75"	< 11.75"
46022 0011	Navy blue	Small	31.5"-35.5"	< 15"
46022 0012	Navy blue	Medium	35.5"-39.25"	< 15"
46022 0013	Navy blue	Large	39.25"-44.5"	< 15"
46022 0014	Navy blue	X-Large	44.5"-47.25"	< 15"
46022 0015	Navy blue	XX-Large	47.25"-55"	< 15"



SPINAL ORTHOSES

www.allardusa.com



VISSION™ LSO SHORT

Our Vission™ LSO Short combines rigid anterior and posterior panels by applying 360° of circumferential compression. By lifting the abdominal muscles, the brace supports and relieves stress on the lumbar spine.

Integrated rigid anterior and removable rigid posterior panels provide firm compressive stabilization. Anterior panels have finger loops for easy closure. The wide elastic cinch straps easily adjust to provide required compression to snug the posterior panel against spine. Rigid posterior panel is heat moldable. Ergonomic stays help to retain brace shape.

Intended use:

Moderate to severe low back pain, lumbar sprains & strains, lumbar muscle weakness, lumbar instability.

Measurement:

Measurement based on hip circumference.

Item No.	Product description	Size	Measure
201120	Vission™ LSO Short	X-Small	28.5" - 32.5"
201130	Vission™ LSO Short	Small	32.5" - 36.5"
201140	Vission™ LSO Short	Medium	36.5 - 40.5"
201150	Vission™ LSO Short	Large	40.5" - 44.5"
201160	Vission™ LSO Short	X-Large	44.5" - 48.5"
201170	Vission™ LSO Short	XX-Large	48.5" - 52.5"
201180	Vission™ LSO Short	3X-Large	52.5" - 60.5"
201190	Vission™ LSO Short	4X-Large	60.5" - 68.5"

3-POINT HYPEREXTENSION BRACE

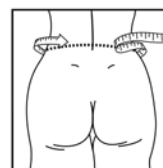
Our Hyperextension Brace provides tri-planar stabilization in a lightweight easy to apply and adjust orthosis. Tri-planar control. Adjustable height. Spring loaded pelvic band reduces upward migration when sitting. Easy to use ratchet adjusts tension for back panel.

Intended use:

Moderate to severe low back pain, lumbar sprains & strains, lumbar muscle weakness, lumbar instability.

Measurement:

Measurement based on waist circumference.



Item No.	Product description	Size	Measure
200432	Vission™ 3-Point Hyperextension Brace	Small	24" - 29"
200442	Vission™ 3-Point Hyperextension Brace	Medium	29" - 35"
200452	Vission™ 3-Point Hyperextension Brace	Large	35" - 41"
200462	Vission™ 3-Point Hyperextension Brace	X-Large	41" - 45"

VISSION™ DENITE (LIGHT SUPPORT)

Our Vission™ Denite Lumbar Support offers intracavitary pressure to reduce strain on the lower back. Stretch denim fabric, bold curved stitching and clever front pocket offer a whole new dimension to back supports! Fresh updated look. Wide criss-cross elastic back straps for added stability.

Recommended Range Of Application:

Use for mild lower back pain and muscle weakness.

Measurement: Measurement based on hip circumference.



Item No.	Product description	Size	Measure
200925	Full Hip	X-Small	33" - 37"
200935	Full Hip	Small	37" - 41"
200945	Full Hip	Medium	41" - 45"
200955	Full Hip	Large	45" - 49"
200965	Full Hip	X-Large	49" - 53"
201025	Straight Hip	X-Small	33" - 37"
201035	Straight Hip	Small	37" - 41"
201045	Straight Hip	Medium	41" - 45"
201055	Straight Hip	Large	45" - 49"
201065	Straight Hip	X-Large	49" - 53"

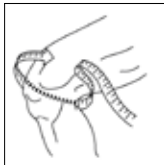
Notes

[illegible]



KNEE ORTHOSES

www.allardusa.com



VISSION™ PATELLA TRAC

Our Vission™ Patella Trac utilizes dynamic straps and a crescent-shaped foam buttress to “pull” and stabilize the subluxing patella into a pain relieving anatomical position. Crescent-shaped patella buttress comfortably contours the patella. Dynamic traction straps position and stabilize the patella. Position buttress to either the medial or lateral side. Open, pressure-free popliteal area. Soft, comfortable lining.

Intended use:

Medial or lateral patella instability, subluxation, chondromalacia, or misalignments of the patella, anterior knee pain.

Measurement:

Measurement based Knee circumference.

Item No.	Product description	Size	Measure
435720	Vission™ Patella Trac	S/M	below 15.75"
435730	Vission™ Patella Trac	L/XL	above 15.75"



CROSS™ KNEE ORTHOSIS FOR HYPEREXTENSION CONTROL

CROSS™ is a semi-rigid knee orthosis intended to be used when knee hyperextension in the knee joint is present. CROSS™ was developed and designed to function together with an Allard AFO (Ankle-foot-orthosis). No straps or buckles that intervene with the composite orthosis. The cross on the back stabilizes knee hyperextension.

CROSS™ has adjustable ROM stops. Flexion: 45°, 60°, 75°, 90° degrees and Extension: 0°, 10°, 20°, 30°, 40° degrees.

Intended use:

CROSS™ is intended for mild to moderate knee hyperextension due to neuromuscular diseases or other injuries. The brace can also be used together with Allard AFOs when knee hyperextension is present together with foot drop.

Item No.	Product description	Sizes	Circum. 6" below mid-patella	Circum. mid-patella	Circum. 6" above mid-patella
287150011	CROSS™ Knee Orthosis	Small	13-15"	13-15"	15¼-17¼"
287150012	CROSS™ Knee Orthosis	Medium	14-16"	14-16"	17-19"
287150013	CROSS™ Knee Orthosis	Large	15.75-17.75"	15¾-17¾"	18½-20½"
287150014	CROSS™ Knee Orthosis	X-Large	17¼-19¼"	17¼-19¼"	20-22½"
287160000	Donning Aid	One Size	-	-	-

POST-OP KNEE BRACE

Our Post-Op Knee Brace is a post-surgical knee brace that provides stabilization with controlled range of motion during rehabilitation.

Flexion stops: 0°, 10°, 20°, 30°, 45°, 60°, 75°, 90°, 105°, 120°

Extension stops: 0°, 10°, 20°, 30°, 45°, 60°, 75°, 90°

Drop lock: at 0°, 15°, 40°, 45°

Open foam option for breathability. Push button flexion and extension control. Drop lock for quick immobilization. Telescopic design for easy length adjustments. Extends from 18" to 25 ½". Quick release strap buckles.

Intended use:

Post-operative fixation and/or range of motion control. Short term stabilization after knee injury.

Item No.	Product description	Size
475150000	Vission™ Post-Op Knee Brace	One Size



ACL BRACE

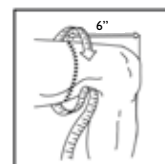
Our low profile ACL Brace with ROM control provides functional support for moderate to severe ACL, MCL, and LCL instabilities. Flexion (45°, 60°, 75°, 90°) and extension (0°, 10°, 20°, 30°, 40°) stops. Sleek, low profile design. Migration resistant strapping. Durable, lightweight aluminum construction.

Intended Use:

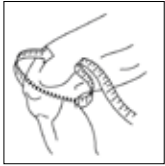
Moderate to severe ACL, MCL, LCL instabilities; ACL reconstructions; Rotational control; Hyperextension; Prophylactic.

Measurement:

6" above knee center.



Item No.	Product description	Side	Size	Measure
425031L	Vission™ ACL Brace	Left	Small	15.5" - 18.5"
425041L	Vission™ ACL Brace	Left	Medium	18.5" - 21"
425051L	Vission™ ACL Brace	Left	Large	21" - 23.5"
425061L	Vission™ ACL Brace	Left	X-Large	23.5" - 26.5"
425031R	Vission™ ACL Brace	Right	Small	15.5" - 18.5"
425041R	Vission™ ACL Brace	Right	Medium	18.5" - 21"
425051R	Vission™ ACL Brace	Right	Large	21" - 23.5"
425061R	Vission™ ACL Brace	Right	X-Large	23.5" - 26.5"



VISSION™ SPRING STAY KNEE SUPPORT

Our Vission™ Spring Stay Knee Support offers firm compression and medial/lateral support for management of mild knee instability.

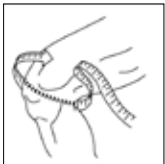
Measurement:

Knee Circumference.

Other:

Medial/lateral spring stays. Soft popliteal knit prevents “bunching”. Perforated, breathable skin-friendly neoprene. Innovative patella-shaped silicone buttress. Pre-flexed design for anatomically contoured fit, also reduces migration.

Item No.	Product description	Size	Measure
43532I	Vission™ Spring Stay Knee Support	X-Small	12" - 13"
43533I	Vission™ Spring Stay Knee Support	Small	13" - 14"
43534I	Vission™ Spring Stay Knee Support	Medium	14" - 15"
43535I	Vission™ Spring Stay Knee Support	Large	15" - 17"
43536I	Vission™ Spring Stay Knee Support	X-Large	17" - 19"



VISSION™ HINGED KNEE SUPPORT

Our Vission™ Hinged Knee Support combines wrap-around straps, medial/lateral hinges and compressive support for management of mild knee instability.

Measurement:

Medial or lateral patella instability, subluxation, chondromalacia, or misalignments of the patella, anterior knee pain.

Measurement:

Knee circumference

Other:

Wrap-around straps secure uprights/hinges in position and minimize migration. Soft popliteal knit prevents “bunching”. Perforated, breathable skin-friendly neoprene with polycentric hinges. Pre-flexed design for anatomically contoured fit, also reduces migration. Pressure relieving, stabilizing patella shaped silicone buttress.

Item No.	Product description	Size	Measure
43542I	Vission™ Hinged Knee Support	X-Small	12" - 13"
43543I	Vission™ Hinged Knee Support	Small	13" - 14"
43544I	Vission™ Hinged Knee Support	Medium	14" - 15"
43545I	Vission™ Hinged Knee Support	Large	15" - 17"
43546I	Vission™ Hinged Knee Support	X-Large	17" - 19"



FOOT & ANKLE ORTHOSES

www.allardusa.com



ANKLE LACED FIGURE 8

Our Ankle Laced Figure 8 offers firm compressive support to help stabilize a weakened or injured ankle. Figure 8 strap replicates ankle taping. Durable construction and fabric resists wear and tear.

Wide elastic cuff provides circumferential compression. Oversized eyelets allow quick lace-up. Design accommodates anatomical contours. Cushioned achilles relief. Convenient finger pulls on strap ends. Fits right or left foot.

Intended use:

Mild to moderate sprains and strains, ankle instability.

Item No.	Product description	Size	Shoe Size
445221	Ankle Laced Figure 8	X-Small	Men's 3 - 5 / Women's 4 - 6
445231	Ankle Laced Figure 8	Small	Men's 6 - 7 / Women's 7 - 9
445241	Ankle Laced Figure 8	Medium	Men's 8 - 10 / Women's 10 - 11
445251	Ankle Laced Figure 8	Large	Men's 11 - 12 / Women's 12 - 13
445261	Ankle Laced Figure 8	X-Large	Men's 13 - 14 / Women's 13+



ANKLE FOOT STABILIZER

Provides warmth so tendons are more responsive to therapy & exercise. Includes medial and lateral stabilizers. Adjustable closure strap for greater support of weak ankles. Non-slip safety sole. Fits right or left foot.

Intended use:

Ideal for patients with diabetes, arthritis, Raynaud's disease and other indications where warmth and stability is desired.

Measurement: Shoe Size.

Item No.	Product description	Size	Shoe Size
475160011	Ankle Foot Stabilizer	Small	Men's 5 ½ - 7 / Women's 6 ½ - 9
475160012	Ankle Foot Stabilizer	Medium	Men's 7 ½ - 10 / Women's 9 ½ - 11
475160013	Ankle Foot Stabilizer	Large	Men's 10 ½ - 12 / Women's 11 ½ - 13
475160014	Ankle Foot Stabilizer	X-Large	Men's 12 ½ - 15 / Women's 13 ½ - 15

NAVIGAIT™ AND 4-FOOT WRAP

NAVIGAIT™ is an alternative for users with mild foot drop. The amount of dorsiflexion is easily adjusted with an elastic coil to accommodate the patient's specific needs.

Supports ankle dorsiflexion during swing phase. Elastic coil adjustable and easily replaceable. Contains removable interface. The amount of dorsiflexion is adjusted through the position in the lacing and with the velcro® attachment on the shin plate. Low profile design makes it invisible under slacks. Anterior shell can be trimmed with scissors if needed.

The optional 4-FOOT Wrap accessory makes it possible to wear NAVIGAIT™ with sandals, shoes that do not have an anchor point, or barefoot. The wrap has a plastic insert for increased stabilization and non-slip silicon strips to keep it in place.

Intended use:

Intended to support a foot when the ability to actively dorsiflex is reduced due to conditions such as Stroke, Multiple Sclerosis, Post Polio Syndrome, or Spinal Cord Injury.

Measurement:

NAVIGAIT™: Height of plastic anterior section

NAVIGAIT™ 4-FOOT Wrap: Circumference of foot over the metatarsal heads.



Item No.	Product description	Size	Height	Circumference
284100010	NAVIGAIT™	X-Small	9"	-
284100011	NAVIGAIT™	Small/Medium	10.5"	-
284100013	NAVIGAIT™	Large/X-Large	11.75"	-
284120010	Additional Strap w/ Coil	X-Small	-	-
284120011	Additional Strap w/ Coil	Small/Medium	-	-
284120013	Additional Strap w/ Coil	Large/X-Large	-	-
284130010	Additional Strong Strap w/ Coil	X-Small	-	-
284130011	Additional Strong Strap w/ Coil	Small/Medium	-	-
284130013	Additional Strong Strap w/ Coil	Large/X-Large	-	-
284140010	Extra Strap Set	X-Small	-	-
284140011	Extra Strap Set	Small/Medium	-	-
284140013	Extra Strap Set	Large/X-Large	-	-
284150011	4-FOOT Wrap	Small	-	8.25" - 9"
284150012	4-FOOT Wrap	Medium	-	9" - 10.25"
284150013	4-FOOT Wrap	Large	-	10.25" - 11.25"



VISSION™ STRETCH-UP

Vission™ Stretch-UP is designed to stretch the plantar fascia, in an active and controlled way, so it heals in a stretched position at night. When properly applied, the sock will hold the forefoot and ankle joints in a slight upward flexion, thereby preventing the plantar fascia from retracting and healing in a contracted position. In the morning, the plantar fascia is at its maximum stretch which reduces or eliminates the sharp pain that often occurs during the first steps.

Intended use:

This product is intended for treatment of Plantar Fasciitis. The sock should be used during night or at rest at any other time. This support is only intended for one person use.

Measurement: Calf circumference.

Item No.	Product description	Size	Calf circumference
341080011	Vission™ Stretch-UP	Small	Less than 7 ¾"
341080012	Vission™ Stretch-UP	Medium	7 ¾" - 15 ¾"
341080013	Vission™ Stretch-UP	Large	Greater than 15 ¾"



NIGHT SPLINT STANDARD

Our Night Splint Standard helps stretch the plantar fascia with adjustable bilateral dorsiflexion straps. Nighttime wear reduces the daytime pain associated with Plantar Fasciitis, Achilles Tendonitis, and other foot and ankle conditions.

Gentle stretch for Achilles Tendon and Plantar Fascia, metatarsal wedge maximizes dorsiflexion stretch, adjustable, bilateral dorsiflexion straps, slip resistant sole, fits right or left foot.

Intended use:

Plantar fasciitis, Achilles tendonitis, Tendonitis.

Item No.	Product description	Size	Shoe Size
445221	Ankle Laced Figure 8	X-Small	Men's 3 - 5 / Women's 4 - 6
445231	Ankle Laced Figure 8	Small	Men's 6 - 7 / Women's 7 - 9
445241	Ankle Laced Figure 8	Medium	Men's 8 - 10 / Women's 10 - 11
445251	Ankle Laced Figure 8	Large	Men's 11 - 12 / Women's 12 - 13
445261	Ankle Laced Figure 8	X-Large	Men's 13 - 14 / Women's 13+

WALKER STANDARD TALL

Our Walker Standard Tall and Short offer circumferential compressive support and immobilization with a contoured-for-comfort liner.

Rocker bottom with ample tread for more natural ambulation. Extra heel width provides more surface contact and better stability. Padded insole for better shock absorption. Seamless foot liner for comfort. Breathable, moisture wicking, contoured-for-comfort liner. Steel reinforced rocker bottom.

Intended use:

Stable fracture of Talus, Tarsus, Tibia and Fibula, severe to moderate ankle sprain & strains, post-operative immobilization, metatarsal fractures.

Item No.	Product description	Size	Shoe Size
44032I	Walker Standard Tall	X-Small	Men's 2 - 4 / Women's 3 - 5 ½
44033I	Walker Standard Tall	Small	Men's 4 ½ - 7 / Women's 6 - 8
44034I	Walker Standard Tall	Medium	Men's 7 ½ - 10 ½ / Women's 8 ½ - 11 ½
44035I	Walker Standard Tall	Large	Men's 11 - 12 ½ / Women's 12 - 13 ½
44036I	Walker Standard Tall	X-Large	Men's 13+ / Women's 14+



WALKER STANDARD SHORT

Our Walker Standard Tall and Short offer circumferential compressive support and immobilization with a contoured-for-comfort liner.

Rocker bottom with ample tread for more natural ambulation. Extra heel width provides more surface contact and better stability. Padded insole for better shock absorption. Seamless foot liner for comfort. Breathable, moisture wicking, contoured-for-comfort liner. Steel reinforced rocker bottom.

Intended use:

Stable fracture of Talus, Tarsus, Tibia and Fibula, severe to moderate ankle sprain & strains, post-operative immobilization, metatarsal fractures.

Item No.	Product description	Size	Shoe Size
44052I	Walker Standard Short	X-Small	Men's 2 - 4 / Women's 3 - 5 ½
44053I	Walker Standard Short	Small	Men's 4 ½ - 7 / Women's 6 - 8
44054I	Walker Standard Short	Medium	Men's 7 ½ - 10 ½ / Women's 8 ½ - 11 ½
44055I	Walker Standard Short	Large	Men's 11 - 12 ½ / Women's 12 - 13 ½
44056I	Walker Standard Short	X-Large	Men's 13+ / Women's 14+





WALKER AIR TALL

Our Walker Air Tall and Short offer an integrated pneumatic single bladder air system combined with circumferential compressive support and immobilization with a contoured-for-comfort liner.

Integrated single pneumatic bladder. Rocker bottom with ample tread for more natural ambulation. Extra heel width provides more surface contact and better stability. Padded insole for better shock absorption. Seamless foot liner for comfort. Breathable, moisture wicking, contoured-for-comfort liner. Steel reinforced rocker bottom.

Intended use:

Stable fracture of Talus, Tarsus, Tibia and Fibula, severe to moderate ankle sprain & strains, post-operative immobilization, metatarsal fractures.

Item No.	Product description	Size	Shoe Size
44042I	Walker Air Tall	X-Small	Men's 2 - 4 / Women's 3 - 5 ½
44043I	Walker Air Tall	Small	Men's 4 ½ - 7 / Women's 6 - 8
44044I	Walker Air Tall	Medium	Men's 7 ½ - 10½ / Women's 8 ½ - 11 ½
44045I	Walker Air Tall	Large	Men's 11 - 12 ½ / Women's 12 - 13 ½
44046I	Walker Air Tall	X-Large	Men's 13+ / Women's 14+



WALKER AIR SHORT

Our Walker Air Tall and Short offer an integrated pneumatic single bladder air system combined with circumferential compressive support and immobilization with a contoured-for-comfort liner.

Integrated single pneumatic bladder. Rocker bottom with ample tread for more natural ambulation. Extra heel width provides more surface contact and better stability. Padded insole for better shock absorption. Seamless foot liner for comfort. Breathable, moisture wicking, contoured-for-comfort liner. Steel reinforced rocker bottom.

Intended use:

Stable fracture of Talus, Tarsus, Tibia and Fibula, severe to moderate ankle sprain & strains, post-operative immobilization, metatarsal fractures.

Item No.	Product description	Size	Shoe Size
44062I	Walker Air Short	X-Small	Men's 2 - 4 / Women's 3 - 5 ½
44063I	Walker Air Short	Small	Men's 4 ½ - 7 / Women's 6 - 8
44064I	Walker Air Short	Medium	Men's 7 ½ - 10½ / Women's 8 ½ - 11 ½
44065I	Walker Air Short	Large	Men's 11 - 12 ½ / Women's 12 - 13 ½
44066I	Walker Air Short	X-Large	Men's 13+ / Women's 14+

Be aware that the brace may alter the patient's abilities for some activities, i.e. driving a car. Review the Instructions For Use supplied with the product with patient and provide them with a copy. Point out where discussed in IFU and remind the patient the importance of routine checking of orthosis for any signs of damage.

Product Warranty

Allard USA obligation under this warranty, is limited to the replacement or repair of any defective part or parts of any product in this catalog within 30 days of fit. Normal wear and tear during the usage of a product is not considered a defect. It does not cover damage by tools, application of heat, or excessive bending/flexing of brace.

Patient Satisfaction Guarantee

If the wearer is not totally satisfied with the product initially fitted within 10 days, Allard USA will at the provider's discretion, provide a FREE alternative product for the wearer to try, or issue full invoice cost credit.

Return Policy

If you have purchased the product from Allard USA:

To help us serve you better and assure you receive appropriate credit, please call toll free 888-678-6548 to receive a Return Authorization (RA) number prior to shipping the return.

If you have purchased the product from a distributor:

Please contact that distributor to obtain a Return Authorization.

If you have purchased the product from any company other than Allard USA:

Please contact that company to obtain a Return Authorization

Delivery Times

It is our goal to ship all orders received by 4:00pm, same day. If for any reason we are unable to meet that goal, you will be contacted.

Terms

There is no minimum order. There is a \$6.00 handling charge per order.

Payment terms are net 30 days. Overdue invoices are subject to a charge of 1.5% of the unpaid balance or .50% per month, whichever is greater.

Ordering Information

To place an order, please contact Customer Service:

Call toll free

888-678-6548

Fax

800-289-0809

Email

orders@allardusa.com

Address

Allard USA, Inc.
300 Forge Way, Suite 3
Rockaway, NJ 07866-2056

Hours of Operation

Monday through Friday
9:00AM - 5:30PM EST

Support

FOR **BETTER** LIFE!



AlIardUSA_Dec2021©

allard | **USA**

allardusa.com

ALLARD USA, INC.
300 Forge Wway, Suite 3
Rockaway, NJ 07866-2056

info@allardusa.com
Toll Free 888-678-6548
Fax 800-289-0809