

## S.W.A.S.H.<sup>®</sup> SIZING GUIDE

Size	Sizes Available		Circumference	
	Classic	Low Profile	Adjustment Range*	
	1	x	x	400-465mm
2	x	x	460-550mm	18-21 3/4in
3	x	x	540-630mm	21 1/4-24 3/4in
4	x	x	620-720mm	24 1/2-28 1/4in
5	N/A	x	710-810mm	28-32in
6	N/A	x	800-900mm	31 1/2-35 1/2in

### PELVIC SECTION

Measure: SWASH CLASSIC - At level of the (ASIS).  
 SWASH LOW PROFILE - At level between crest of ilium and ASIS. Ideal is to fit the orthosis at mid-pelvic girdle to obtain firm grasp and control of the pelvis. Depending on anatomy, final fitting location may vary from just below the waist (navel) to mid pelvic girdle.

Size	Sizes Available		Circumference	
	Classic	Low Profile	Adjustment Range*	
	1	x	x	210-250mm
1A	x	N/A	210-250mm	8 1/4-9 3/4in
2	x	x	250-290mm	9 3/4-11 1/2in
3	x	x	290-330mm	11 1/2-13in
4	x	x	330-380mm	13-15in
5	N/A	x	380-440mm	15-17in
6	N/A	x	440-500mm	17 1/4-19 1/2in

### THIGH CUFFS

Measure at distal thigh, just proximal to the condyles. Ideal is to fit the cuffs as distal as possible without creating pressure or interference in the popliteal area. However, pressure on the thorax, excessive spinal flexion, or discomfort due to hamstring tightness, may be relieved by moving the cuffs up 1 - 3 inches.

Size	Upright Diameter		Upright Length	
	Classic	Low Profile		
	1	6mm	8mm	310mm
2	7mm	8mm	375mm	14 3/4in
3	7mm	8mm	440mm	17 1/4in
4	7mm	8mm	480mm	19in
5	N/A	8mm	540mm	21 1/4in
6	N/A	8mm	600mm	23 1/2in

### UPRIGHTS

Measure waist to mid-patella. At final fitting, should be shortened to level of distal thigh cuff padding.  
 115 = narrow sitting base  
 123 = wide sitting base

SWASH CLASSIC				
Size	SWASH CLASSIC		UPRIGHTS	
	PELVIC	CUFFS	115 Deg.	123 Deg.
1	288000001	288030001	288010001	288020001
1A*	N/A	288030015	N/A	N/A
2	288000002	288030002	288010002	288020002
3	288000003	288030003	288010003	288020003
4	288000004	288030004	288010004	288020004

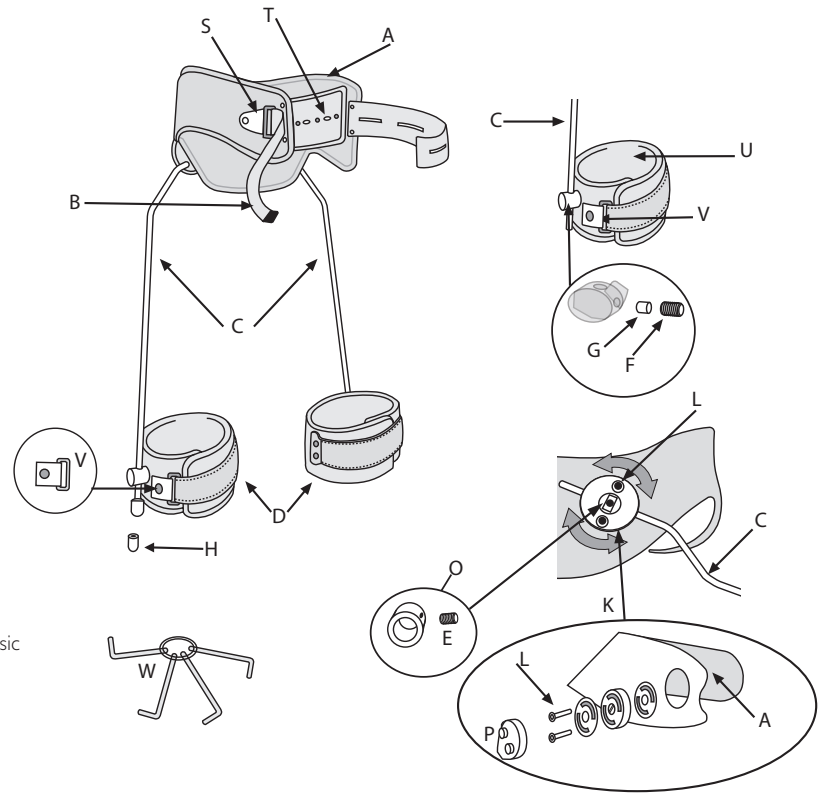
SWASH LOW PROFILE				
Size	SWASH LOW PROFILE		UPRIGHTS	
	PELVIC	CUFFS	115 Deg.	123 Deg.
1	288350001	288420001	288400001	288410001
2	288350002	288420002	288400002	288410002
3	288350003	288420003	288400003	288410003
4	288350004	288420004	288400004	288410004
5	288350005	288420005	288400005	288410005
6	288350006	288420006	288400006	288410006

\*Size 1 Cuff that fits Size 2 Upright

NOTE: Color Coding indicates interchangeable components.

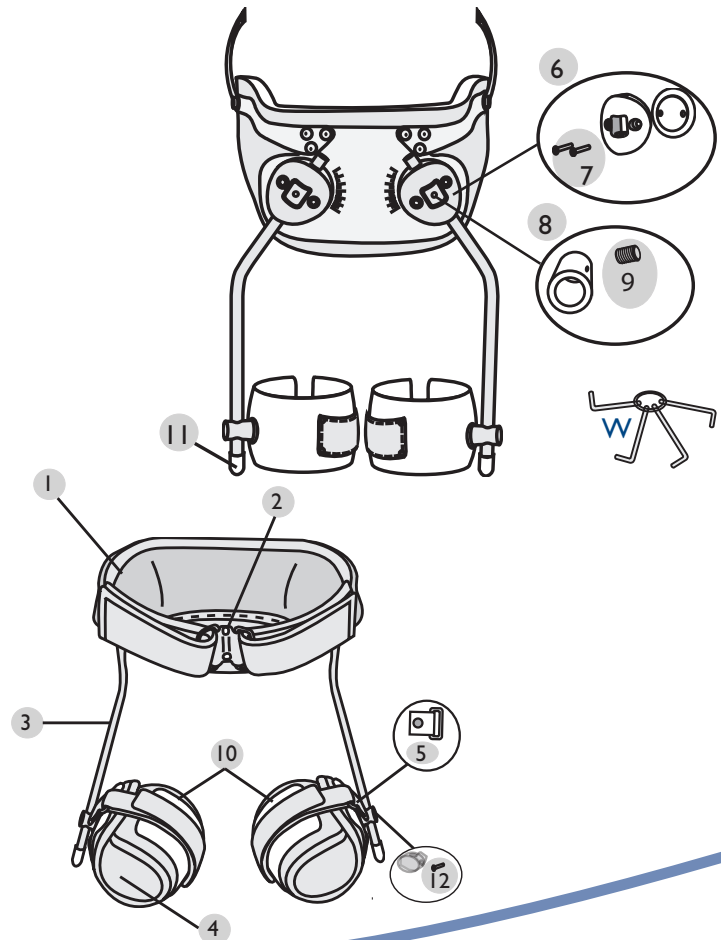
## Classic

28801	Leg Bars 115°	C, H, O
28802	Leg Bars 123°	C, H, O
28803	Thigh Cuffs w/padding	D
28804	Pelvic Padding	A
28805	Joint Set (1)	K
28806	Boss Cover (2)	P
28807	Clamp Ring for Leg Bars (2)	O
28808	Screw set	E, F, G, L
28809	Brass Bushings for Thigh Cuff (10)	G
28810	Slide buckle for waistband	S
28811	Waistband screw set	T
28812	Waistband webbing with snap (1)	B
28813	Rubber Stoppers, SZ 1 (set of 2), SZ 2-6 (set of 10) <b>IMPORTANT:</b> Specify needed for Classic	H
28814	Thigh Cuff Padding (2)	U
28815	Buckle with snap for Thigh Cuff (1)	V
28820	Allen key, set of 4	W



## Low Profile

28836	Pelvic Padding with Abdominal Pad	1, 2
28840	Leg Bars 115°	3, 8, 11
28841	Leg Bars 123°	3, 8, 11
28842	Thigh Cuffs w/padding	10
28843	Thigh Cuff padding (2)	4
28844	Joint set (2)	6, 8
28845	Screw set	7, 9, 12
28846/47	Abdominal Pad	2
28848	Clamp Ring Set	8
28849	Buckle with snap for Thigh Cuff (2)	5
28813	Rubber stoppers (2) <b>IMPORTANT:</b> Specify needed for Low Profile	11
28820	Allen Key, set of 4	W



This product should only be fitted by a certified professional.