

allard|<sup>U</sup><sub>S</sub><sup>A</sup>

INSTRUCTIONS

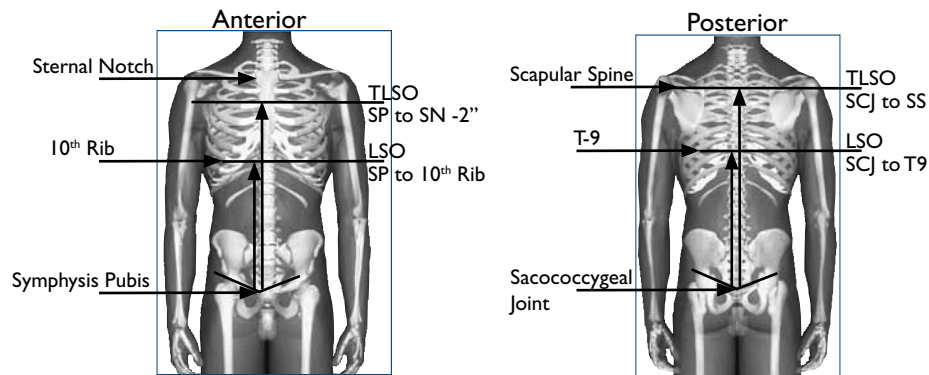
# PRO FESSIONAL



**3D-LITE™** **Cut-4-Custom**  
**TL/LSO & LSO**

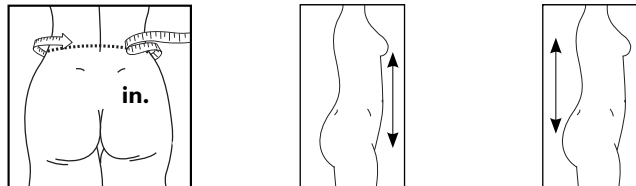
[www.allardusa.com](http://www.allardusa.com)

# 3D-LITE™ Cut-4-Custom Bi-Valve TLSO & LSO



## Sizing

1. Start by measuring the waist circumference.
2. Take vertical measurement required to meet prescription criteria.
3. Select appropriate front and back modules below.



	Description	Circumference inches		Max Height Front	Max Height Back
		min	max	inches	inches
<b>LSO</b>	LSO, XS/S	23 1/2	29 1/2	7 3/4	11 3/4
	LSO, S/M	27 1/2	35 1/2	7 3/4	12 1/2
	LSO, M/L	33 1/2	41 1/4	8 1/2	13 1/4
	LSO, L/XL	37 1/2	47 1/4	9 1/2	13 3/4
	LSO, XL/XXL	45 1/2	55	10 1/2	14 1/4
<b>LSO+</b>	LSO+, XS/S	23 1/2	29 1/2	11 3/4	11 3/4
	LSO+, S/M	27 1/2	35 1/2	12 1/2	12 1/2
	LSO+, M/L	33 1/2	41 1/4	13 1/4	13 1/4
	LSO+, L/XL	37 1/2	47 1/4	13 3/4	13 3/4
	LSO+, XL/XXL	45 1/2	55	14 1/4	14 1/4
<b>TLSO</b>	TLSO, S/M	27 1/2	35 1/2	16 1/2	16 1/2
	TLSO, M/L	33 1/2	43 1/4	18 3/4	18 3/4
	TLSO, XL/XXL	41 1/4	55	21 1/4	21 1/4
<b>TLSO+</b>	TLSO+, S/M	27 1/2	35 1/2	18 1/2	18 1/2
	TLSO+, M/L	33 1/2	43 1/4	21 1/2	21 1/2
	TLSO+, XL/XXL	41 1/4	55	23 1/2	23 1/2

## IMPORTANT!

When applying the Cut-4-Custom, it is important to wrap the material, using either elastic wrap or a hospital abdominal binder. Start with back section and when it has cooled, continue with the front. Wrapping is needed to assure the material fits the body contours and holds the pre-cut in position until it hardens.

## 1. Heat & Mold

3D-Lite is a low temperature thermoplastic. Heat in 160 – 175°F oven, or use a heat gun until soft and pliable (approximately 5 minutes).

- 1.1 Place the back section into the oven or use heat gun.
- 1.2 To protect the skin – put a T-shirt or cotton stockinette on your patient.
- 1.3 Drape the softened back section over the back and use the full palm of your hand to gently mold the 3D-Lite to fit the contours of the anatomy.
- 1.4 Wrap with a hospital abdominal binder (or 6” elastic wrap) to hold the 3D-Lite in position, snugly against the anatomical contours.
- 1.5 Remove the abdominal binder or elastic bandage. The back section will usually adhere to the T-shirt or cotton stockinette - leave it attached.
- 1.6 Heat the anterior section in the oven or with a heat gun.
- 1.7 Hold the back section in place as you drape and mold the front section over the abdomen, overlapping the front over the back at the sides. To ensure good fit, gently close the Velcro straps.
- 1.8 Wrap the hospital binder (or elastic bandage) around both sections to hold snugly in proper position until the 3D-Lite becomes rigid.



## 2. Soft Lining

Turn lining inside right as you slip the lining over each section (seam should be to inside of fabric). Both the front and back large openings should be on the outside of the brace. Gently cut holes into the lining (the fabric does not fray) to access the Velcro/D-rings.

## 3. Adjustments

Should it be necessary to trim the 3D-Lite material, please use 3D-Silicone Edging or 3D-Safe to seal the edges before patient use.



 Runlite SA, Belgium.  
Tel (32) 4 / 377 30 26.  
Made in Belgium.

allard|USA

[www.allardusa.com](http://www.allardusa.com)

**ALLARD USA, INC.**  
300 Forge Way, Suite 3  
Rockaway, NJ 07866-2056

[info@allardusa.com](mailto:info@allardusa.com)  
Toll Free 888-678-6548  
Fax 800-289-0809