

ORTHOTIC SOLUTIONS FOR MANAGEMENT OF FOOTDROP AND ANKLE INSTABILITY

Over a decade of Development



97 *Introducing* **TOEOFF**
The world's first dynamic response carbon composite Ankle Foot Orthosis for the management of footdrop.



TOEOFF SHORT
Shorter front and wider footplate



NOT FOR RESALE
For in-clinic patient assessment



SOFTSHELL
For a softer look



TOEOFF FANTASY
For a glossy surface



YPSILON
For more flexibility



BLUE ROCKER
For maximum stability



KIDDIE GAIT
Dynamic Response for Pediatrics



T-STRAP
Pes Valgus Control



KIDDIE GAIT
For Babies and Toddlers



COMBO
Controls Genu-Recurvatum with footdrop



COMBO
The newest edition!

ToeOFF[®] Family of Products

The ToeOFF Family is an unparalleled group of products developed to assist different levels of dorsi-flexion weakness. ToeOFF has been considered a quantum leap in AFO technology since it was launched in 1997.

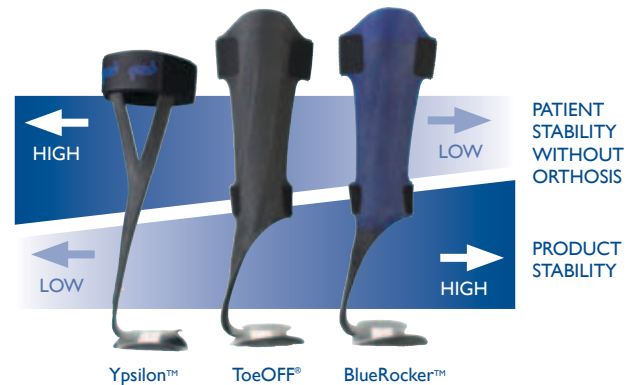
What differentiates the ToeOFF Family of Products compared to other AFO's is the series of dynamic lever arms that are built into each product along with the open calcaneal design.



The softness at heel contact, the stability in stance and the dynamic "toe-off" offer the patient increased function and a more fluid and balanced gait pattern.

One exclusive feature of the ToeOFF Family of Products is the ability to customize the dynamic and stabilizing properties to fit your patient's needs. This can be done by going up or down in size or category to obtain added stability or a more dynamic response.

More information about fitting and customization can be found in the ToeOFF Clinical Manual.



Ypsilon[™] For less involved cases of footdrop



Ypsilon was designed for the stable ankle to provide dynamic toe-off assistance while allowing natural ankle movement.

- Allows more medial, lateral and rotational ankle movement, which will provide an opportunity for muscles, tendons and ligaments to function and strengthen.

Ypsilon is recommended for patients with:

- Weak dorsi-flexors
- Peroneal nerve injury
- No/mild spasticity
- Stable ankle
- Sensory Nerve Injury

ToeOFF® *For moderately involved cases of footdrop*

ToeOFF is the original dynamic response floor reaction ankle foot orthosis and is now recognized as a quantum leap in AFO technology.

- Each patient can be fit with a customized dynamic response AFO based upon their level of involvement, activity level, body weight and proximal deficits.
- Walking can become more stable, fluid, propulsive and symmetrical.
- As the appearance of a limp decreases, energy expenditures decrease and distance capacity increases.

ToeOFF is recommended for patients with:

- Footdrop with moderate involvement, mild to severe footdrop accompanied with mild to moderate ankle instability
- Impaired knee control
- Limb proprioception deficit
- Mild to moderate spasticity



ToeOFF Fantasy

FANTASY offers a glossy colored finish to the otherwise natural flat black carbon composite and allows cloth trousers to glide freely over the product. Offered in Ivory, Purple, Midnight Blue, and Black.

ToeOFF Short

ToeOFF Short is designed to accommodate individuals with a shorter stature and wider foot at the metatarsal heads.

BlueRocker™

For more involved cases of footdrop



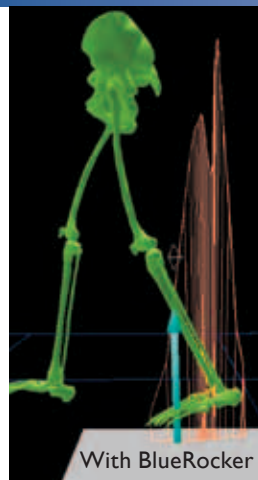
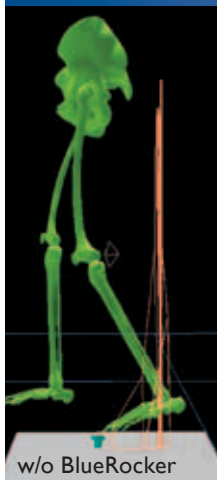
BlueRocker is identical in shape and design as ToeOFF but offers added stability.

- Developed primarily for bilateral patients and those with more involved pathologies.
- The extra stability will improve both balance and posture. This offers the wearer greater security, especially those with weak quadriceps muscles.
- The preferred orthosis to be used in conjunction with a prosthetic socket and toe filler for management of partial foot amputations.

BlueRocker is recommended for patients with:

- Footdrop with multi-level involvement, severe ankle instability and/or proximal neuromuscular weakness/deficits
- Limb proprioception deficit
- Moderate to severe spasticity
- Partial foot amputations
- Reduced knee and hip control
- Weakness or impairment in multiple leg muscle groups

Gait analysis with and without BlueRocker



Without his BlueRocker, this patient walks flat-footed, with little or no heel strike or toe-off. With the BlueRocker on you can see an increase in stride length, a heel-to-toe gait pattern as well as improved balance and stability.

	Left w/o BR	Right w/o BR	Normal	Left with BR	Right with BR
Gait speed (m/s)	0.54	0.58	1.43	0.86	0.88
Step frequency (step/min)	84.1	85.5	91.6	98.8	99.0
Cycle length (m)	0.75	0.79	1.44	1.04	1.06
Step length (m)	0.36	0.40	0.72	0.52	0.52
Support of other leg*	66.4	64.8	60.1	65.9	65.8
Single support*	34.6	35.0	39.6	34.2	34.6

(*=% of gait cycle)

Assessment Orthosis

NOT FOR RESALE

Ypsilon, ToeOFF, BlueRocker, KiddieGait and BabyGait are also available as a special assessment orthosis known as “Not-for-Resale”. The orthosis is labeled as “Not-for-Resale” and is designed to be used as an initial assessment tool to evaluate functional improvement, patient acceptance as well as a gauge to decide which modifications will be necessary to optimize the patient’s gait pattern. If the patient feels any discomfort or pain, the trial should be stopped immediately. Due to the orthosis influencing the gait pattern, some patients can react to this. It is recommended to do the initial fitting/walking in parallel bars or with a walker.



CD-ROM Presentation
available upon request.

softKIT™

Every ToeOFF and BlueRocker should have a soft interface between the orthosis and the tibial crest. For this reason, we offer SoftKIT, available in Black and Beige.

- A padding system that includes two narrow neoprene pads to create a pressure-free channel to help relieve any potential discomfort from bony prominences.
- Comes in a package with two SoftKIT liners and a set of MicroFIX tabs to secure it to the brace.
- May be applied to either ToeOFF or BlueROCKER.
- The Beige matches perfectly to the Fantasy Ivory.



comfortKIT™



Let's face it. Everyone's leg has a different shape and different skin condition. The new ComfortKIT offers a solution for ToeOFF and BlueRocker users that require added cushioning due to the shape of the tibia, skin condition, diabetes and/or activity level.

An inner layer of polyurethane foam adds significant cushioning, molds naturally to the patient's leg and returns to its original shape when removed from the patient.

Like SoftKIT, ComfortKIT is easily adhered to the ToeOFF or BlueRocker with aggressive MikroFix.

The ComfortKIT consists of two interfaces and one set of MikroFix tabs.



softSHELL™



For individuals that prefer a softer look. SoftSHELL combines the padding system of SoftKIT with a plush textile front to form a sleeve that slides over the anterior shell. It includes a matching cover for the lower strut. SoftSHELL is offered in Brown and Beige. Blue denim to be available in the coming months.



T-Strap



T-Strap for Pes Valgus control is another innovative ToeOFF Family Product.

- T-Strap pulls the talocrual and subtalar joints laterally to position them back underneath the tibia.
- Quick and easy to apply: Distal end attaches to bottom of ToeOFF footplate, proximal “T” wraps around ankle and attaches to the ToeOFF Family product’s lateral strut.
- Easily adjusted to customize to the height of the patient’s medial malleolus.
- Plastazote inner core may be gently heated with dry heat to improve shape and fit.
- Soft, breathable, yet supportive outer fabric.

F.O.S Foot Orthotic Shell

A foot orthotic shell fabricated with EFM (Extra Firm Material) that is a high density, heat moldable EVA. It is grindable and washable. It is the highest source of rigidity for orthoses, short of plastic. The Microcell Puff® Interface is Ethylene Vinyl Acetate (EVA) foam. EVA is a wonderful shock absorber that is heat moldable and has excellent shape retention and abrasion resistance.



Customization Guide

The Customization Guide is a tool designed to assist you with the different techniques that you can use to optimize the patients' outcomes using the ToeOFF Family of Products.



Product size... involves more than foot length

Measurements shown are for the orthosis only. Read your ToeOFF Clinical Manual (PDF available at www.allardusa.com) to determine product selection (ToeOFF, Ypsilon, or BlueRocker) and best size to meet specific patient needs.

Size	TOEOFF, FANTASY, BLUEROCKER		YPSILON		TOEOFF SHORT	
	Height	Footplate Length	Height	Footplate Length	Height	Footplate Length
XS	14" (360mm)	8 1/4" (210mm)	-----	-----	-----	-----
S	15" (380mm)	9" (230mm)	13" (330mm)	9" (230mm)	11 5/8" (295mm)	8 1/2" (215mm)
M	16" (405mm)	9 5/8" (245mm)	13 3/8" (340mm)	9 5/8" (245mm)	12 5/8" (320mm)	9 1/4" (235mm)
L	17" (430mm)	10 5/8" (270mm)	13 3/4" (350mm)	10 5/8" (270mm)	13 5/8" (340mm)	10" (255mm)
XL	17" (430mm)	11 1/4" (285mm)	-----	-----	-----	-----

KIDDIEGAIT		
Size	Height	Footplate
BabySmall	6" (150mm)	4 1/4" (110mm)
BabyMedium	7" (180mm)	5" (125mm)
BabyLarge	7 3/4" (200mm)	5 1/2" (140mm)
Small	8 5/8" (220mm)	6 1/4" (160mm)
Medium	10 1/4" (257mm)	7" (180mm)
Large	11 5/8" (295mm)	7 3/4" (200mm)



For more information about KiddieGAIT contact customer service.

Patent no.:

ToeOFF, ToeOFF Short, ToeOFF Fantasy, ToeOFF NFR, BlueRocker, BlueRocker NFR, KiddieGAIT, KiddieGAIT NFR: AU736950, BE1005297, BE1114626, DK1005297, DK1114626, FI1005297, FI1114626, FR1005297, FR1114626, IE1005297, IE1114626, IT1005297, IT1114626, CA2279225, CNZL97181689.1, NL1005297, NL1114626, NO313656, PL194247, CH1005297, CH1114626, ES1005297, ES1114626, GB1005297, GB1114626, SE1005297, SE1114626, DE69709184.8-08 DE69732541.5-08, US5897515, ATE210417, ATE289187
Ypsilon, Ypsilon NFR: GE60208889.5-08, GB1379201, IT1379201, US6887213